

## SPECIFICATION SHEET

# LinearLED

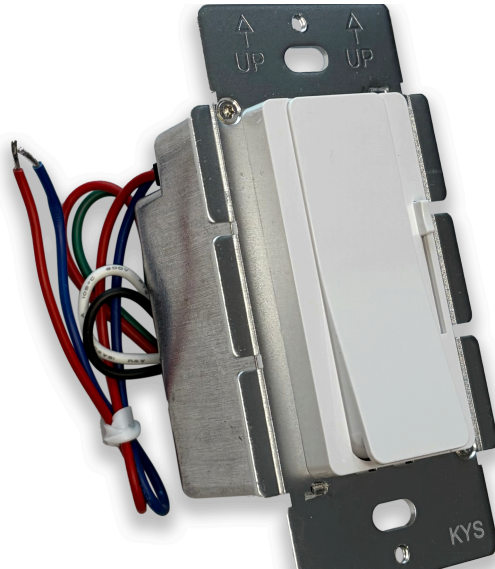
TYPE:

PROJECT:

QTY:

## OTM-BD160-24-D

2 in 1 dimmer and built-in 160w LED driver 24v



UL US  
LISTED  
E507826

CE

RoHS  
COMPLIANT

### Features

- Dimmer + Driver 2 in 1
- Input: 120VAC
- Dimming: 100% - 0.3% Load Sensing Auto-rim
- Switching: Single Pole/ 3-way
- Certification: UL Listed, FCC, RoHS
- 5-year warranty
- Class 2

SPECIFICATION SHEET



TYPE:	PROJECT:	QTY:
-------	----------	------

Specifications

Output	DC Voltage	24VDC
	Voltage Accuracy	±5%
	Rated current	1.25Amp
	Rated power	160W
	Voltage Regulation	±0.5%
	Load Regulation	±1%
Input	Voltage Range	100-277 VAC
	Frequency Range	47~63HZ
	Power Factor (Typ.)	PF≥0.99/110V   PF≥0.97/277V
	Full Load Efficiency (Typ.)	>84%
	AC Current (Typ.)	0.5A
	Leakage current	<0.27mA/110VAC; <0.25mA/277VAC
Protection	Short Circuit	Hiccup mode, recovers automatically after fault condition is removed.
	Over Loading	≤120% shut down o/p voltage, re-power on to recover
	Over temperature	100°C±10°C shut down o/p voltage, automatically recover after cooling.
Environment	Working TEMP.	-40~+60°C
	Working Humidity	20~90%RH, non-condensing
	Storage TEM. Humidity	-40~+80°C, 10~95%RH
	TEMP. coefficient	±0.03%/°C (0~50°C)
	Vibration	10~500Hz, 2G 10min./1 cycle, period for 60min. each along X, Y, Z axes
Safety & EMC	Safety standards	UL8750+UL1310
	Withstand voltage	I/P-O/P: 3.75KVAC
	Isolation resistance	I/P-O/P: 100MΩ/500VDC/25°C/70%RH
	EMC EMISSION	FCC Part 15 B
	EMC IMMUNITY	Compliance to EN61000-4-2,3,4,5,6,11, A light industry level
Others	Weight	0.3 Kg
	Size	105*54*51 mm (L*W*H)
Notes	<p>1. All parameters NOT specially mentioned are measured at 110VAC, 277VAC input, Rated load and 25°C of ambient temperature.</p> <p>2. Tolerance: includes set us tolerance, line regulation and load regulation.</p>	